



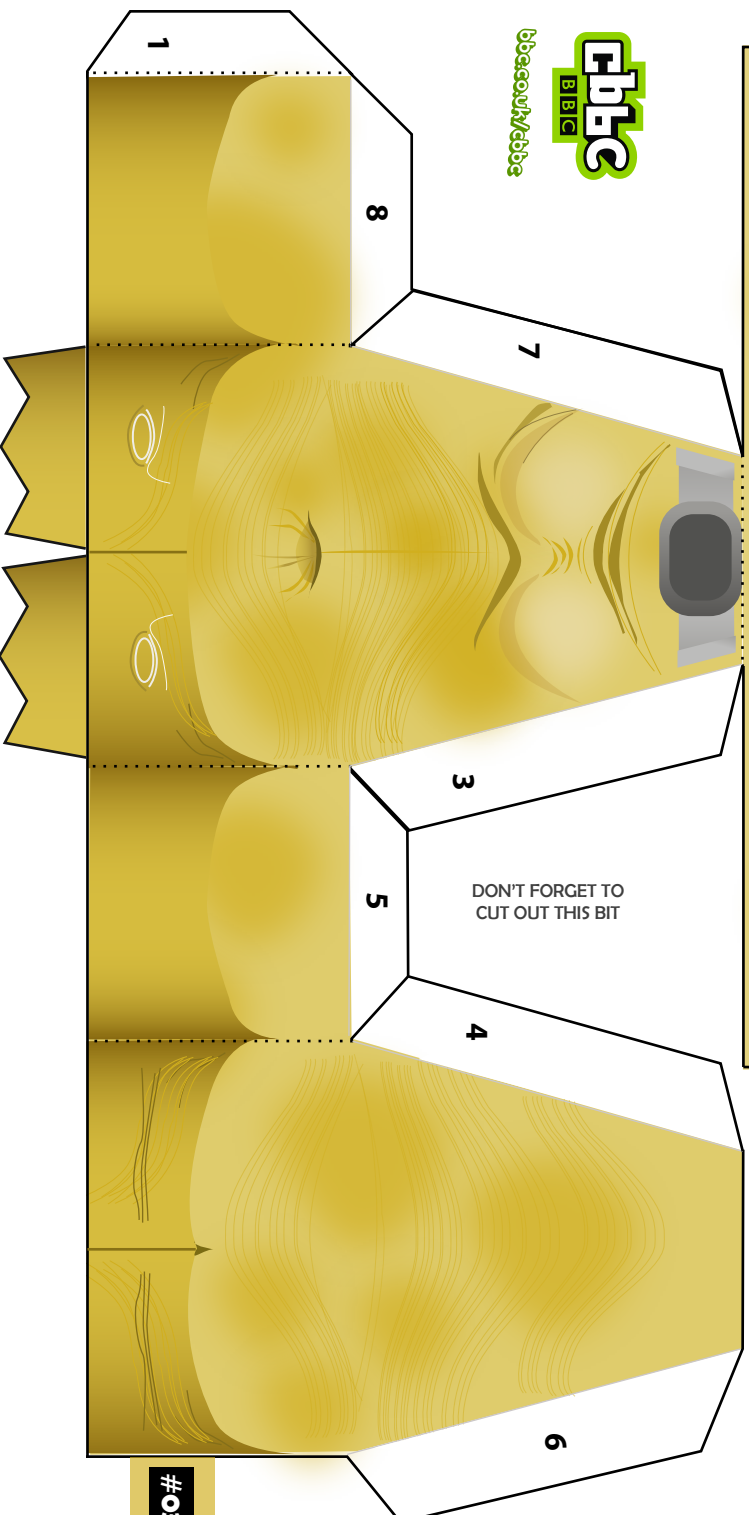
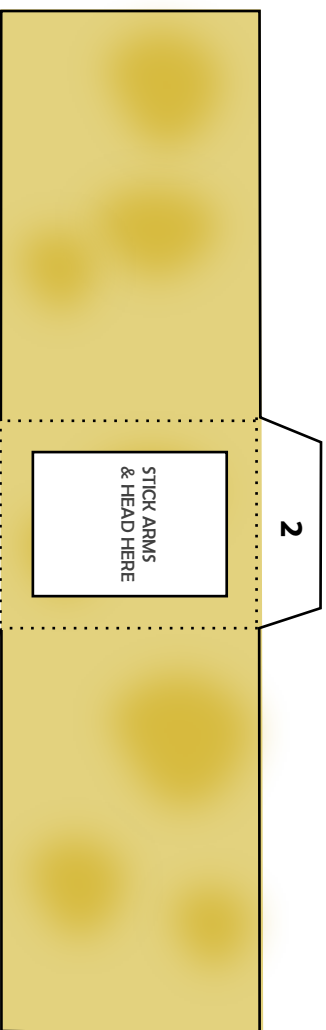


Blathereen

I'm the Blathereen
Foldee!

Print me out from any
printer, start folding
and stick me together!

Are you brave enough
to assemble me
human? Bwah-ha-ha!
parrp! Oops... Pardon
me...



A) THIS IS AN ADVANCED FOLDEE! IT IS A LITTLE MORE TRICKY TO MAKE THAN A BASIC FOLDEE BUT IT'S WORTH IT!

B) CUT OUT TEMPLATE (ASK AN ADULT TO HELP YOU)

C) FOLD ALONG THE **DOTTED LINES**

D) STICK TOGETHER, STARTING WITH NUMBER 1

E) MAKE THE BODY PART FIRST, THEN THE ARMS & HEAD

F) THEN STICK THEM TOGETHER. MAKE SURE YOU

LOOK AT THE 3D PICTURE FOR GUIDELINES

#030

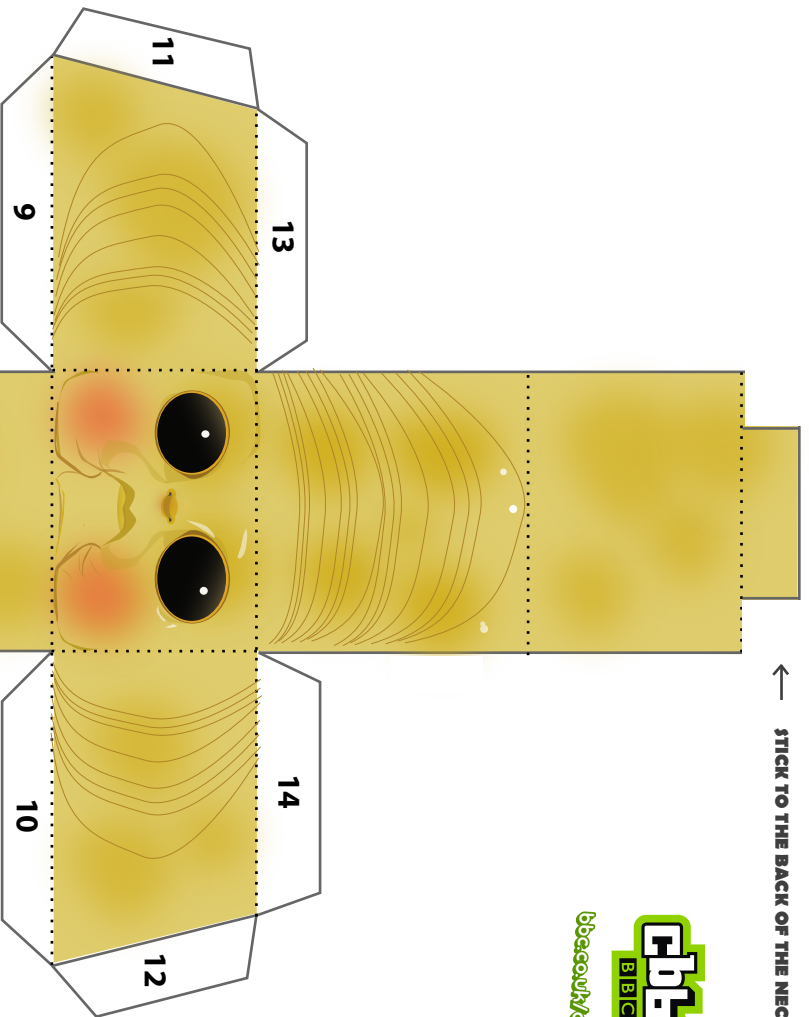




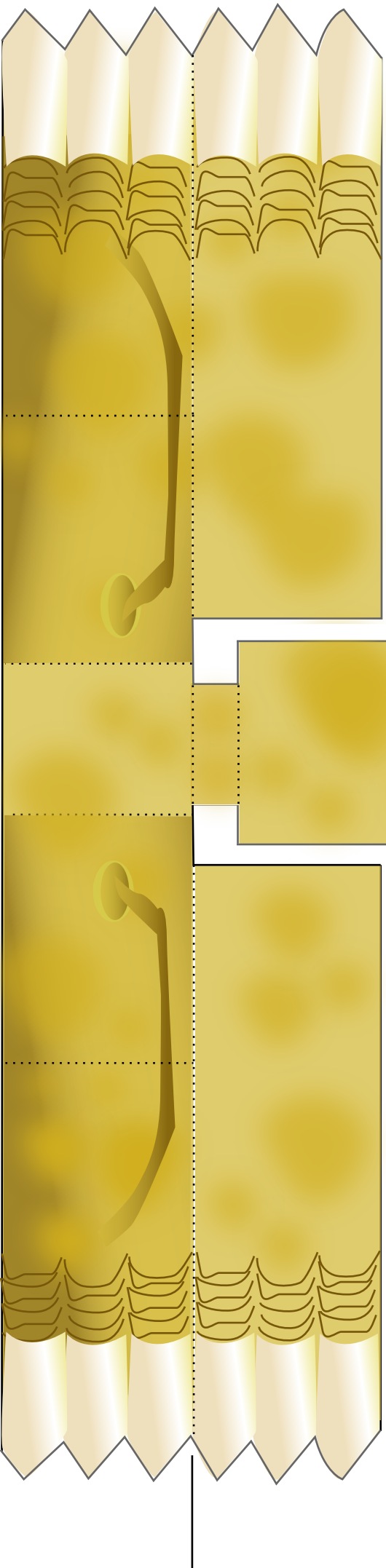
← STICK TO THE BACK OF THE NECK



- A) CUT OUT TEMPLATE (ASK AN ADULT TO HELP YOU)
- B) FOLD ALONG THE : : : DOTTED LINES
- C) STICK TOGETHER, STARTING WITH NUMBER 9



FOLD ALONG THIS LINE, & STICK THE FRONT & BACK OF THE ARMS TOGETHER



← A) ATTACH TO BODY HERE